

BLUE PUCK T-PROBE



Bluetooth Low Energy temperature sensor BENEFITS

- Approved EN12830 v2018
- Very high autonomy : up to 15 years
- High transmission range
- Waterproof IP68
- Smart & secure programming by NFC
- Over The Air Programming (OTAP)
- Dynamic Advertising period



Including a 1m cable

TECHNICAL SPECIFICATIONS

OPERATING MODE

| | |
|-----------------------------------|---|
| Frequency | 2,4 GHz - Bluetooth Low Energy 4.0/4.2 |
| Output power | Up to +4 dBm (configurable) |
| Range | Up to 500 meters open field (+4dBm) |
| Transmission period | 2 advertising periods can be configured (value between 0,1 and 86400 seconds). Transition from one to another according to configurable sensor threshold |
| Radio frame format | ELA ID (15 bytes identifier) ELA T (15 bytes identifier + 2 bytes Temperature (in 0.01°C)) <i>Other frame format available on request. Refer to the frames specifications for more informations</i> |
| Settings and configuration | Interface/protocol : NFC (Type 2) |
| Connected mode | Datalogger download /Battery level command |
| Sensors performance | Range : -80 to +200 °C Resolution : 0.1 °C Accuracy : ±0.5 °C maximum (-30°C to +60°C) ±1°C maximum (-40°C to +150°C) ±2°C maximum (-80°C to +200°C) Calibration Configurable 3-points calibration coefficients COFRAC calibration in Factory COFRAC accredited calibration as an option |

BATTERY

| | |
|----------------------|---|
| Power supply | 3 VDC – Internal lithium battery |
| Battery life | Up to 15 years* <i>*Refer to the battery life curves for more information</i> |
| Battery level | Low battery warning in advertising frames (<15%) |

CERTIFICATIONS (in progress)

| | |
|---------------|--|
| Europe | CE / UK CA : EN 300 328/ EN 301 489 & EN 55032 / EN 62368-1 EN12830 (temperature recorders) |
| USA | FCC : FCC PART 15 |
| Canada | ISED : RSS-247 / ICES-003 |
| RoHs | Yes |

HOUSING

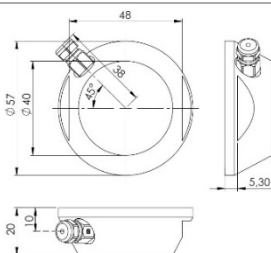
| | |
|---------------------------------------|---|
| Dimensions | PUCK housing : Ø 57 mm base - height 20 mm Probe : Ø 3 mm – Length 28 mm – M8 Cable : 1 m |
| Weight | 63 g |
| Materials | PUCK housing : DELRIN (POM C) Compatible with food products (90/128/EEC) Probe : Stainless steel Cable : Teflon (1m) |
| Waterproof grade | PUCK housing : IP 65 Probe : IP68 |
| Operating /storage temperature | PUCK housing : -40°C to +85°C Probe : -80°C – +200°C |



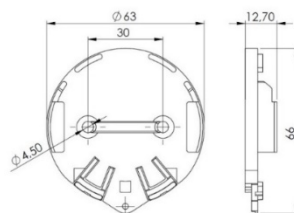
ACCESSORIES

| | |
|--------------------|---|
| Tag support | Holder + double-sided adhesive: PUCK HOLDER STICKER (ACIOM118B) Holder only: PUCK HOLDER (ACIOM117B) Double-sided adhesive only: PUCK STICKER (ACIOM188) 3M PT1100 - Ø 55mm – Thickness: 1,1mm |
|--------------------|---|

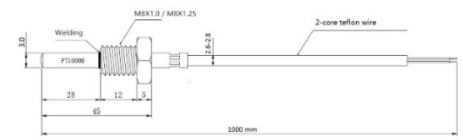
MECHANICAL DRAWINGS



PUCK HOUSING



PUCK HOLDER



PROBE PT1000

Specifications may be modified without any notification. Non-contractual document.