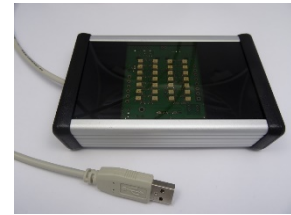


SCIEL PROG IR

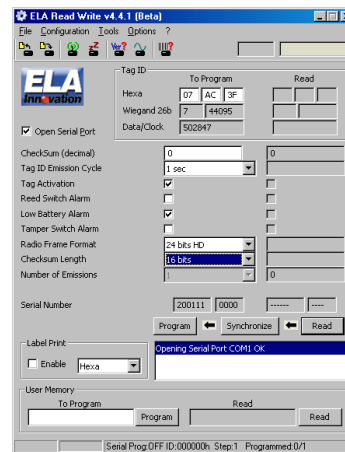
Active RFID Tag Encoder and ERW software



- Infrared contactless encoder for all ELA INNOVATION Active Tags
- Coupled with our ERW Configuration software for PC
- Tag settings and activation
- USB auto-powered device



Specifications	
Connection	USB 1.1
Frequency	433.92 MHz
Writing speed	4 KHz
Writing method	Infrared protocol
Housing	Aluminum : 125x80x30 mm
Operating Temperature	-25°C to +60°C



1 DESCRIPTION

The SCIEL PROG IR (reference SCP02) manages the Reading and the Writing process of all our Active RFID tags through the Infra Red technology.

The device has a 1.1 USB port.

The configuration software ERW (Ela Read Write) manages the SCIEL PROG IR. It enables to:

- Program a tag on an individual basis
- Program tags per batch
- Load all the programming actions
- Program the tag's ID
- Program the tag's settings (emission cycle, alarm management, ...)
- Activate and deactivate directly the tags
- Program and read the tag's internal user memory (100 octets sized information not transmitted)

2 SOFTWARE INSTALLATION


Before connecting the SCIEL PROG IR device to your computer, it is required to install the USB driver on your computer. The driver is compatible with OS Windows XP, Vista, 7 and 8. The USB driver is available on our DOWNLOAD area on our website: www.elainnovation.com

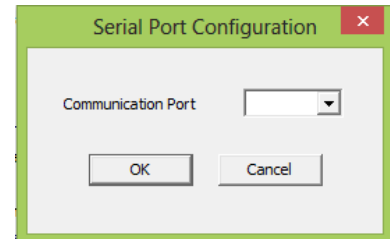
Then you have to download the ERW configuration freeware, also available on our DOWNLOAD listed above.

Please follow step by step the instructions given during the installation process.

3 SCIEL PROG IR – OPERATING MODE

3.1 ERW Configuration & Commands:

 We advise to check that the COM PORT where the SCIEL PROG IR device is connected is correctly defined in the ERW software. Please click on the menu « Configuration » and « Serial Port » the select the COM PORT used by the USB cable.



3.2 RFID active tag's placement on SCIEL PROG IR

Before making any operation on the active tag itself, this one has to be placed directly on the SCIEL PROG IR's glass window, without any particular direction.



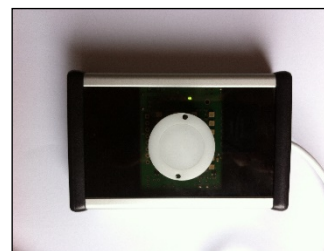
ITEMS_IR Placement



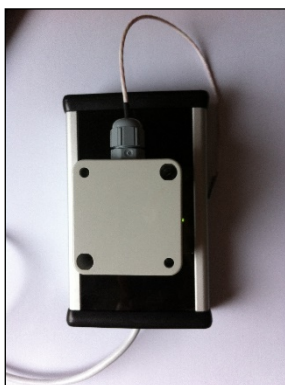
SLIM_ID Placement



THINLINE Placement



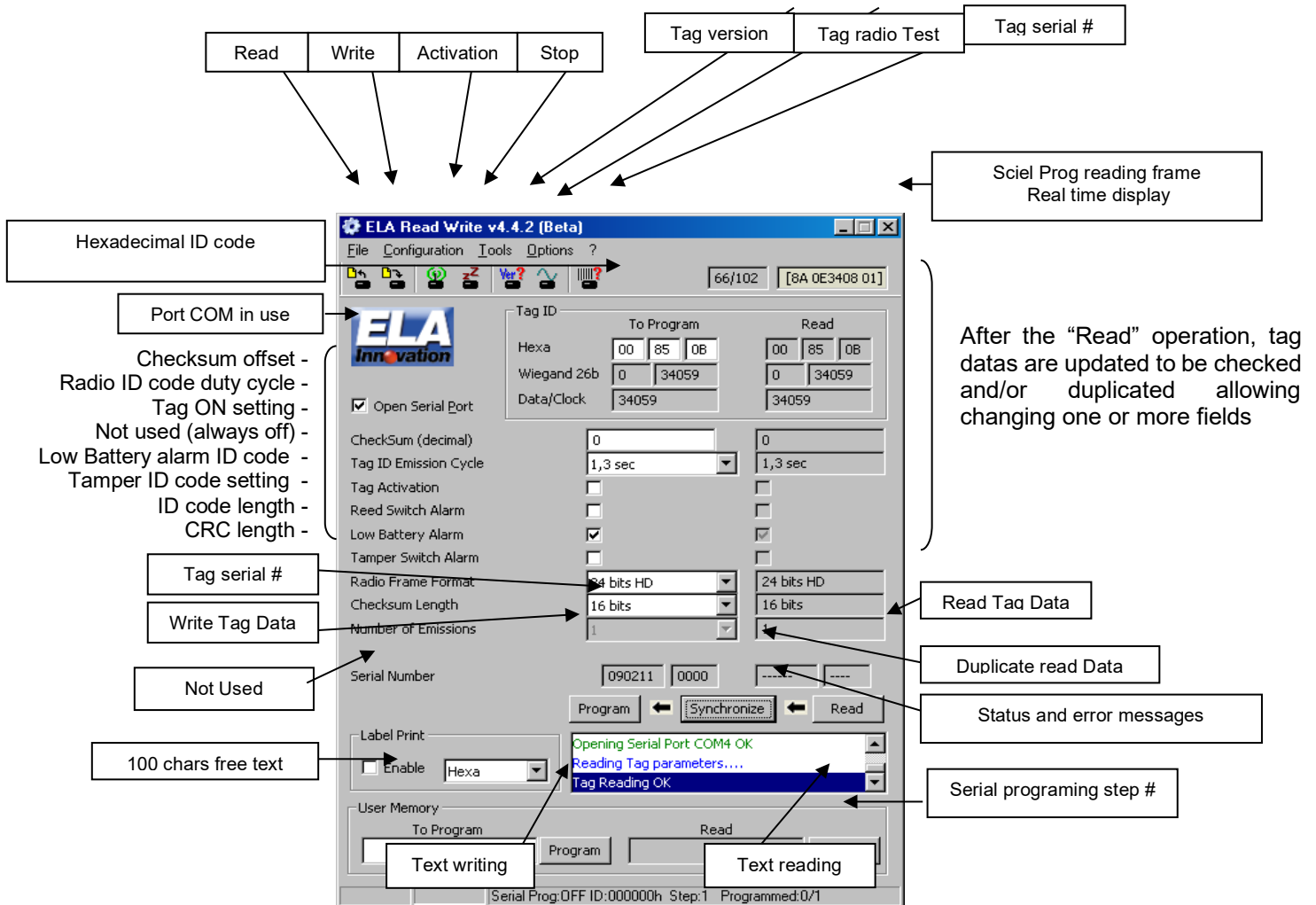
COIN Placement



ITEMS_TD, ITEMS_E, ITEMS_DG, ITEMS_AD Placement

Please note the grey top cover has to be removed

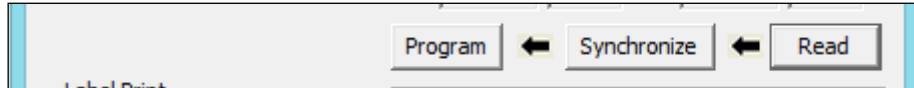
3.3 ERW MAIN PAGE DESCRIPTION:



3.4 Basic Operations:

3 steps have to be followed to configure the tags ;

- **READ step:** operation which reads all the tag's settings
- **SYNCHRONIZE step:** operation to copy and paste the settings to the left column, used to change the settings
- **PROGRAM step:** operation which consists of loading all the left column's values into the tag.

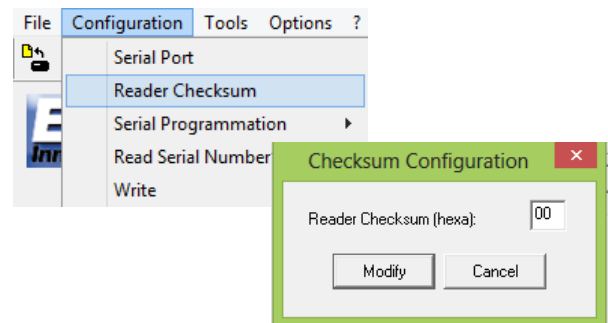


3.5 CONFIGURATION MENU

Reader Checksum :

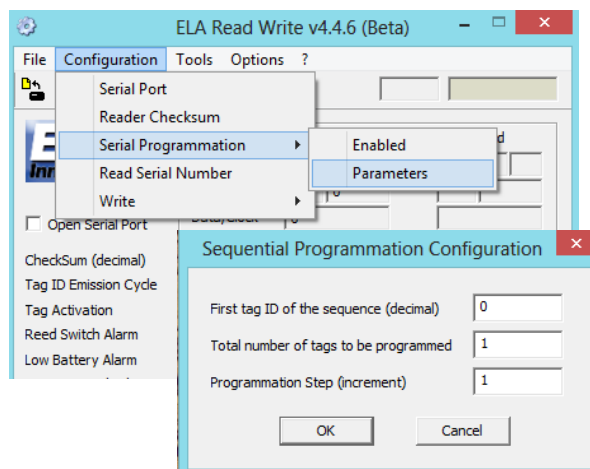
In the case that you need to change the CRC value of the SCIEL PROG IR, in order to be compliant with the CRC of your tag(s), you can select this option and load your CRC value.

By default, the value is 00.



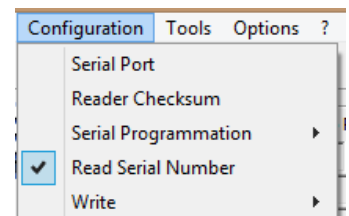
Serial programming:

This feature can be used to program a batch of RFID active tags, with n tags, with a first ID and an incremental decimal path.

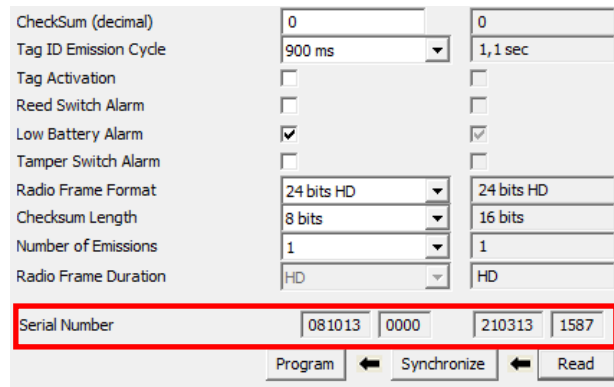


Read Serial Number:

You can activate or deactivate this option. By activating this option, at each Reading operation, the ERW software will read the tag's settings **AND** its internal serial number.



This value will be displayed in the ERW main page at the following location:




3.6 TOOLS MENU

In this menu, you could find the same features as the ones displayed at the top of the ERW homepage. Actually, you can select:

- Read Tag
- Program Tag
- Enable Tag (activate)
- Disable Tag (deactivate)
- Tag Software version
- Enable Radio Carrier
- Read Serial Number

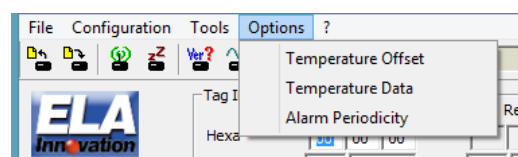
The respective icons for these features are:



3.7 OPTIONS MENU

Only 1 of the 3 displayed options in this menu is enabled:

- **Temperature Offset**
- *Temperature Data (disabled option)*
- *Alarm Periodicity (disabled option)*

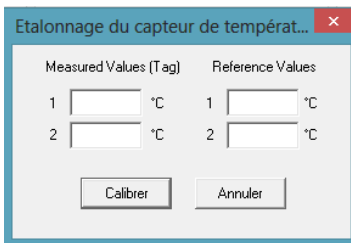
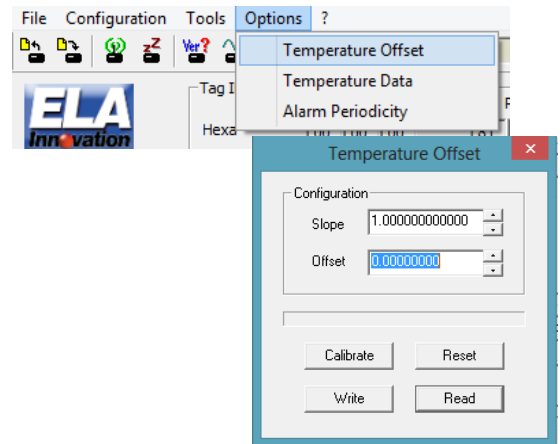


Temperature Offset

The first option has to be used to calibrate our wireless RFID Temperature sensors.

By clicking on Temperature Offset, you can define a slope value and an offset value for the sensor, compared to your master sensor.

The Reset, Read and Write buttons have to be used to read and modify the tag's temperature settings.



In the case that you do not know the slope and offset values, you can click on Calibrate button. A text box will appear, enabling you to load 2 slots of master and actual values. The offset and slope will be then automatically defined.

Temperature Data

This option is currently disabled.

Alarm Periodicity

This option is currently disabled.