

Success story

## » **Asset tracking**

location of mobile equipment





# » ELA Innovation et Apitrak deploy

an indoor location solution at the Allo Pneus Warehouse

AlloPneus logistics platform, storing more than a million of tyres and shipping 50,000 products a day, chose **Apitrak and ELA Innovation** to quickly and efficiently **locate** its **industrial equipment**, with the aim of improving the site's **safety** and **optimizing its management**.

ELA Innovation and Apitrak have deployed, over the 84,000 m<sup>2</sup> of the **Valencia** platform, an adapted solution allowing to **detect, locate and trace** precisely the different logistics equipment such as forklifts.

## » The key players



IoT sensor manufacturer



Integrator of IoT solutions



Technology provider



End user

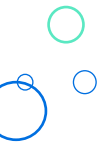


« ELA Innovation's equipment is particularly well suited for harsh environments. We used the PUCKs to geolocate forklift at alloPneus.com in Valencia: Good tag holding performance on trucks in harsh conditions. »

V.Lê, CEO, Apitrak

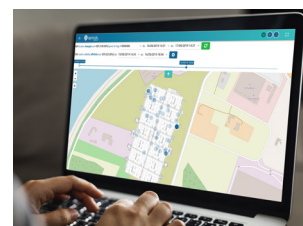
## » The client needs

- ✓ Analyze movements in order to optimize fleet, storage and operations.
- ✓ Cover a very large area with a lot of mobile equipment.
- ✓ Locate equipment in real time.
- ✓ Improve security on the logistics platform.



## » The equipment

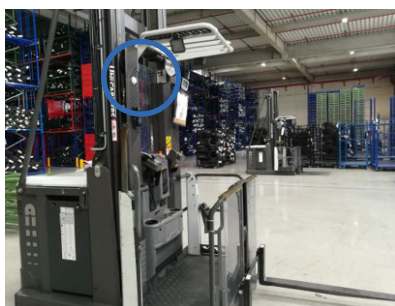
- ✓ ELA Innovation tags: **Blue PUCK ID Mesh** (1) (30 anchors et 410 mobiles)
- ✓ Industrial gateway(2)
- ✓ IoT platform **Apitrak Explorer**(3)



## » The operating mode

From a technical point of view, the **location solution** is based on a **mesh network** of **fixed and mobile beacons**. The first one, also known as anchors, are installed at regular intervals (25 meters) throughout the site, while the mobile tags are positioned directly on the industrial equipment. The **mobile Blue PUCK ID Mesh** emits signals to the various anchors, which in turn **pick up all dialogues and transmit** the information to the **gateway**.

However, as the **data collected** by the sensors are raw, they are **transformed into GPS data** (latitude and longitude) by the **Wirepas Positioning Engine tool** and visualized on the **Apitrak Explorer** web application. This **complete solution** has been developed and implemented by **Apitrak**, which takes care of installation, maintenance, technical support and the IoT platform.



## » The results

- ✓ **Save 30 minutes per day** thanks to the 1-click verification of the trolleys' loading.
- ✓ **Better knowledge** of the damage causes of the equipment and goods causes, thanks to their movement tracking history.

## » The advantages

- ✓ Compact, waterproof and robust tags
- ✓ Low TCO
- ✓ Easy-to-install plug&play solution
- ✓ 100% autonomous tags
- ✓ Real-time location
- ✓ Accuracy from 5 to 10 meters